

Medical Centers

Below are most of the medical facilities located in The District and Montgomery County. This list is for reference only and should not be used in an emergency because printed material can become outdated. Also, not all the facilities below include emergency facilities. Therefore, we encourage you to locate your nearest emergency room when you move. In an emergency always dial 911!

MONTGOMERY COUNTY

Adventist Rehabilitation Hospital of MD
9909 Medical Center Dr.
Rockville, MD 20850
(240)864-6000 - Beds: 77
www.adventisthealthcare.com/ARHM
Adventist Rehabilitation Hospital of Maryland is the first and only acute rehabilitation hospital in Montgomery County. It offers comprehensive rehabilitation programs for traumatic brain injuries, spinal cord injuries, strokes, amputations, orthopedic injuries and surgeries, cardiopulmonary conditions and neurological disorders.

Holy Cross Hospital
1500 Forest Glen Rd.
Silver Spring, MD 20910
(301)754-7000 - Beds: 398
www.holycrosshealth.org
Holy Cross Hospital was founded in 1963, and today, with more than 30,000 annual admissions, is the largest community hospital in Maryland. Holy Cross Hospital offers a full range of inpatient and outpatient primary and specialty care services utilizing its Silver Spring hospital campus and its multiple sites throughout Montgomery County.

Montgomery General Hospital
18101 Prince Philip Dr.
Olney, MD 20832
(301)774-8882 - Beds: 191
www.montgomerygeneral.com
Founded in 1918, the original hospital had 28 beds and was the first acute care hospital in Montgomery County. Montgomery General Hospital serves the greater Baltimore and Washington metro areas.

Shady Grove Adventist Hospital
9901 Medical Center Dr.
Rockville, MD 20850
(301)279-6000 - Beds: 268
www.adventisthealthcare.com/SGAH
When Shady Grove Adventist Hospital opened its doors in 1979, it stood alone among the undeveloped rolling pastures and farm fields of western Montgomery County. Since then, more than 300,000 new residents have moved to the county.

Suburban Hospital Healthcare System
8600 Old Georgetown Rd.
Bethesda, MD 20814
(301)896-3100 - Beds: 228
www.suburbanhospital.org
Suburban Hospital is a community-owned hospital serving Montgomery County and the surrounding area since 1943. It is an acute-care, medical-surgical hospital featuring all major services except obstetrics. Admissions total more than 13,600 annually.



Washington Adventist Hospital
7600 Carroll Avenue
Takoma Park, MD 20912
(301)891-7600 - Beds: 292
www.adventisthealthcare.com/wah
Washington Adventist Hospital is Montgomery County's first complete cardiac center, performing 700 open heart surgeries and more than 8,000 heart catheterizations each year. A fast-paced emergency department provides round-the-clock, high-volume medical and nursing care throughout the year.

WASHINGTON, DC

Children's National Medical Center
111 Michigan Avenue, NW
Washington, DC 20010
(202)884-3000 - Beds: 279
www.dechchildrens.com
Children's National Medical Center, is a leader in the development of innovative new treatments for childhood illness and injury.

Among the top ten pediatric hospitals in America, Children's has been serving the nation's children for more than 130 years.

George Washington University Hospital
900 23rd Street, NE
Washington, DC 20037
(202)715-4000 - Beds: 371
www.gwhospital.com
A multi-disciplinary and tertiary care hospital, serving a diverse group of patients - from area residents to visiting dignitaries and heads of state.

Georgetown University Hospital
3800 Reservoir Rd. NW
Washington, DC 20007
(202)444-2000 - Beds: 609
www.georgetownuniversityhospital.org
With a 609-licensed bed hospital, 1100 physicians, and primary care providers at numerous sites in the DC area, Georgetown University Hospital's clinical services represent one of the largest, most geographically diverse and fully integrated healthcare delivery networks in the area and has been ranked among the best in the nation by U.S. News and World Report for 14 years in a row.

Greater Southeast Community Hospital
1310 Southern Ave. SE
Washington, DC 20032
(202)574-6000 - Beds: 450
www.greatersoutheast.org
Greater Southeast has served residents east of the Anacostia River for nearly four decades and has evolved to become nationally recognized as a model for community hospitals in an urban setting.

Hadley Memorial Hospital
4601 Martin Luther King Jr. Ave. SW
Washington, DC, 20032
(202)574-5770 - Beds: 62
www.hadleyhospital.com
As a long-term acute care hospital, Hadley provides the phase of care that exists between the onset of a patient's illness or injury and that patient's final, full recovery. Hadley does not offer emergency, surgery, or outpatient services; its focus is on addressing recovery and long-term health stability.

Howard University Hospital

2041 Georgia Ave. NW
Washington, DC 20060
(202) 865-6100 - Beds: 482
www.huhosp.org

Howard University Hospital, a 482-bed award winning university and teaching hospital, has proudly served the global community with a commitment to innovative patient care, teaching and research. Howard University Hospital is the only African American academic and comprehensive health care center in the country.

National Rehabilitation Hospital

102 Irving Street, NW
Washington, DC 20010
(202)877-1000 - Beds: 137
www.nrhrehab.org

National Rehabilitation Hospital specializes in treating persons with physical disabilities caused by spinal cord and head injuries, stroke, arthritis, amputation, multiple sclerosis, post-polio syndrome, and other neurological and orthopedic conditions. Physicians nationwide consistently rank NRH among "America's Best Hospitals," as reported by U.S. News & World Report.

Providence Hospital

1150 Varnum St., NE
Washington, DC 20017
(202)269-7000 - Beds: 382
www.provhosp.org

Chartered by President Abraham Lincoln in 1861, Providence Hospital stands as the oldest continuously operating hospital in the nation's capital.

Sibley Memorial Hospital

5255 Loughboro Rd., NW
Washington, DC 20016
(202)537-4000 - Beds: 328
www.sibley.org

Sibley is a non-profit, full service 328 bed acute care community hospital serving the DC area. Its campus is also home to an assisted living residence, Grand Oaks and The Sibley Renaissance.

The Specialty Hospital of Washington

700 Constitution Ave. NE
Washington, DC 20002
(202)675-0400 - Beds: 60
www.specialtyhospitalofwashington.com

The Specialty Hospital of Washington focuses on long-term intensive medical care

and is licensed as a Long Term Acute Care Specialty Hospital.

Walter Reed Army Medical Center

6900 Georgia Ave. NW
Washington, DC 20307
(202)782-3501

www.wramc.amedd.army.mil
The Walter Reed Health Care System provides comprehensive health care for more than 150,000 soldiers, other service members, family members and retirees in the National Capital Area.

Washington Hospital Center

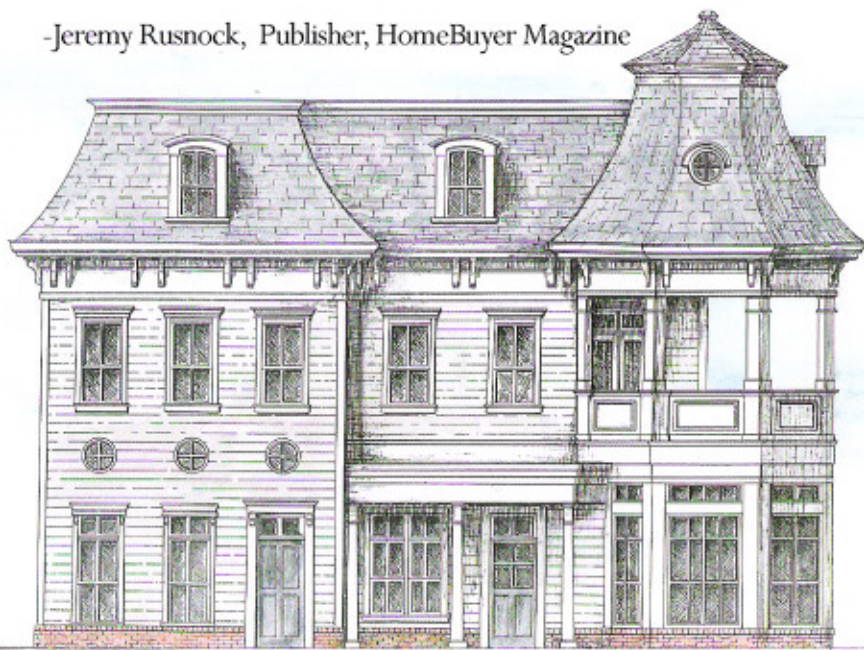
110 Irving Street, NW
Washington, DC 20010
(202)877-7000 - Beds: 709
www.whcenter.org

Washington Hospital Center is the largest private hospital in the nation's capital. A member of MedStar Health, the not-for-profit Hospital Center provides health services in primary, secondary and tertiary care to adult and neonatal patients.



"I trust my family with Dr. Dennis Stiles & Dr. Marie Tigani Stiles. You can too!"

-Jeremy Rusnock, Publisher, HomeBuyer Magazine



Stiles Family Dentistry

in The Kentlands

333 Main Street

Gaithersburg, MD

(301)947-6900

www.stilesdentistry.com

American Dental



Association Members

Graduates of



THE PANKEY INSTITUTE
FOR ADVANCED DENTAL EDUCATION
www.pankeydentist.org